



www.focuzmedical.in

PRECISION CRAFTED
GLOBALLY TRUSTED



ENDOSCOPIC ACCESSORIES



Focuz Medical, a distinguished ISO 13485 certified manufacturer, stands at the forefront of developing groundbreaking medical devices essential for Gastroenterology, Urology, and Interventional Radiology. The company's commitment extends beyond technological innovation; it intertwines medical expertise with responsible business practices, envisioning a future where healthcare is both advanced and affordable. Focuz Medical aspires to be globally recognized and socially respected, not just as a medical solution provider but as a beacon for socially conscious businesses, setting a standard for the industry.



www.focuzmedical.in



ABHIMANYU WIRE™ - GUIDEWIRE

Abhimanyu Wire – Green Guide Wire with Hydrophilic Tip

Available Size | 0.032", 0.035"

Available Length | 150cm

EKLAVYA WIRE™ - ZEBRA GUIDEWIRE

PTFE Coated Nitinol core Guide Wire with hydrophilic tip. Blue-White zebra sleeves. Available in Tungsten Hydrophilic tip with single side and dual side tip

Available Sizes | in 0.025", 0.032", 0.035"

Available Length | 150cm



ETERNIS WIRE™ - GUIDEWIRE ZEBRA TYPE GUIDE WIRE WITH HYDROPHILIC TIP

Eternis™-PTFE Coated Zebra type Nitinol Guidewire with hydrophilic tip. These guide wires uses Nitinol core with yellow & black PTFE sleeves, designed to provide excellent visualization.

Available Size | 0.025", .032" , .035" , .038"

Available Length | 260cm, 450cm




SIGNATURE™- GUIDEWIRE HYDROPHILIC DUAL TIP GUIDEWIRE

Signature™Dual tip Guidewires have Hydrophilic coated tip at both ends. Hydrophilic coating reduces surface friction and enhances

Available Size | 0.025", .032" , .035"

Available Length | 260cm, 450cm





HYDROPHILIC GUIDEWIRE

Hydrophilic Guide Wire are Nitinol core-based GuideWire with Hydrophilic coating

Available Size | 0.025", .0.035" , 0.035"

Available Length | 150cm, 260cm

BILIARY STENT - ELEXI STENT™

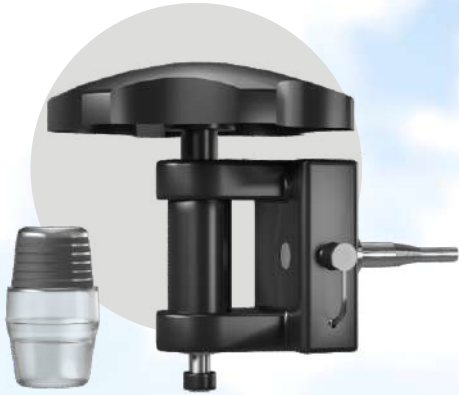
Guide wire compatibility | 0.025",0.032",0.035

Available Length | 5 cm to 15 cm

Available Size | 5fr, 7fr, 8fr, 10fr

Variant options as below





MULTIBAND LIGATOR FOCUZ BAND™

- Easy to Deploy
- Excellent Endoscopic View
- Extremely less tension on the shaft of endoscope



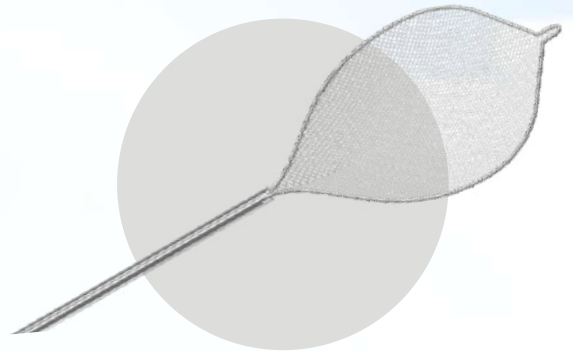
SCELROTHERAPY NEEDLE PLUGE NEEDLE™

- Used for injection of vasoconstrictor agents, cyanoacrylate glue & tattooing
- PTFE (Teflon) outer sheath makes this needle more flexible even in retroflexion



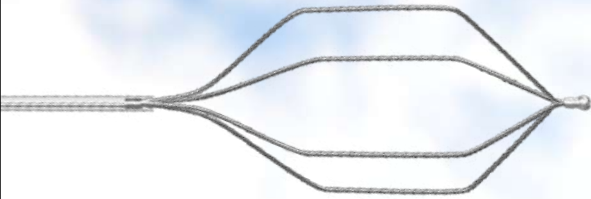
HEMOSTATIC CLIP

- Hemostatic clips are placed in the upper and lower gastrointestinal tracts to suture upper and lower gastrointestinal bleeding
- Smooth coating and excellent clamping strength
- High elastic material reduces damage to the lesion
- Available Size | 9mm, 11mm, 13mm and 16mm
- Available Length | 230cm



LOOP BASKET

- Used to retrieve foreign bodies and polyps from the digestive tract under endoscopy
- Handle can be rotated synchronously
- Mesh net design reduces risk of specimen slippage
- Imported nylon smooth conforming material
- Available Size | 45mm
- Available Length | 230cm

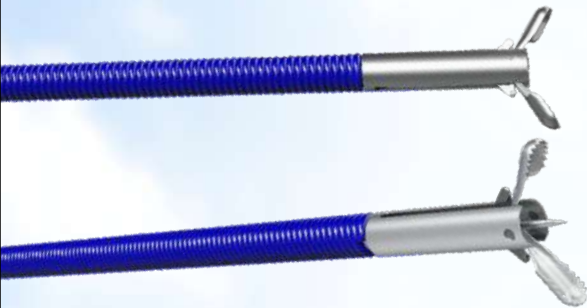


BILIARY BASKET - ASTROID BASKET™

- Multifilament, Hexagonal shape
- Sterile, Blunt tip for easy insertion
- Not compatible with Lithotripter
- Available Size | 1.8mm, 2.3mm
- Available Length | 230cm

POLYPECTOMY SNARE - AXTEL SNARE™

- Oval loop, Crescent loop and Hexagon Shape loop
- Available Length | 230cm
- Available Size | 35mm & 45mm

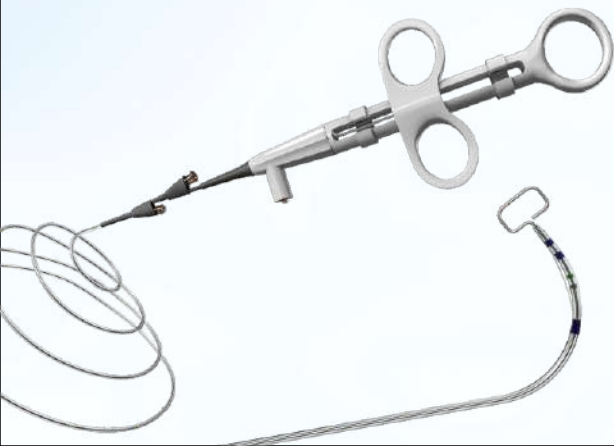


BIOPSY FORCEPS

- Comes with and without spikes
- Comes with small and large jaws
- Available length | 180cm & 230cm
- Available Size | 1.8mm, 2.3mm

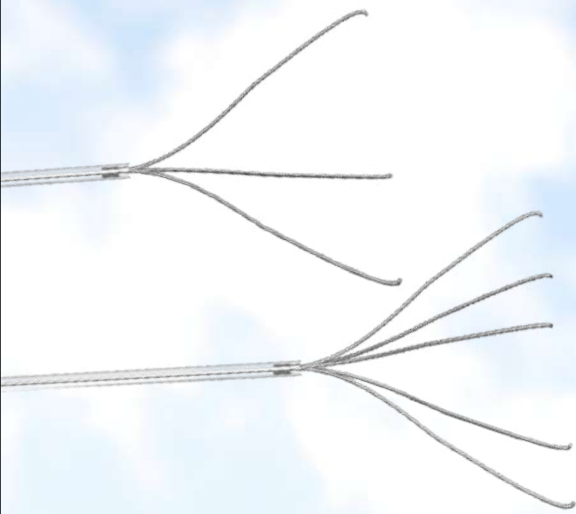
BIOPSY FORCEPS - RAT TOOTH

- Comes with jaws like that of rat tooth
- Available Length | 180cm & 230cm



SPHINCTEROTOME

- Sphincterotome facilitates a smooth reliable access to the
- Common BileDuct
- Center Injection Lumen design allows injection of contrast to exit from the center of the catheter enabling delivery of contrast to the intended duct
- Available Size | 2.3mm
- Available Length | 200cm

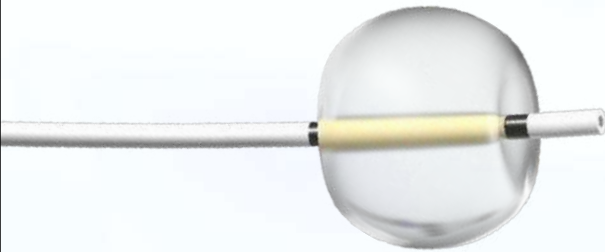


GRASPING FORCEPS

- Disposable retrieval forceps used for the retrieval of foreign bodies in the gastrointestinal tract during endoscopy procedures.
- Available in 5 prongs and 3 prongs

BILIARY STENT DELIVERY SYSTEM

- Delivery System is designed to maximize flow rates, improve push ability through tortuous anatomy to aid accurate placement of the stent.
- Size 10fr | Length 180cm

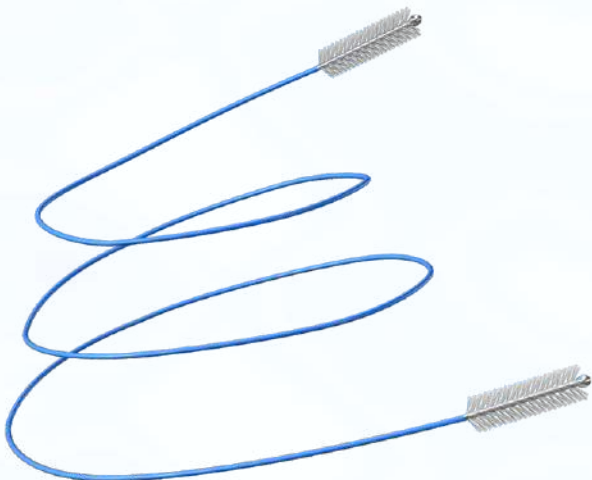
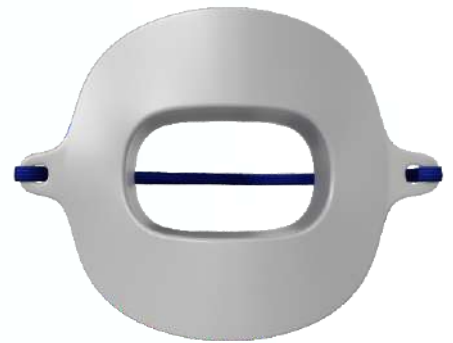


STONE RETRIEVAL BALLOON

- Used to remove stones from biliary system
- Available in balloon diameter of 9-12mm, 12-15mm, 15-18mm in 200cm length

BITE BLOCK

- They aid in the correction of a deep bite in cases of front teeth overlap



CLEANING BRUSH

- Protective Tip
- Channel compatibility: 2.8 mm



INNOVATING HEALTH
EMPOWERING LIVES
INSPIRING CHANGE

Equipped with enhanced process technology, this facility solidifies Focuz Medical's standing in the realm of endoscopy accessories. The company's unwavering dedication is manifested in its pursuit of technological advancements, contributing to elevated healthcare standards worldwide. Focuz Medical aims to bridge medical expertise with social responsibility, laying the foundation for a healthier and more compassionate tomorrow.



204, Narmada Complex,
Nr. Kadiwala School,
Ring Road, Surat-395002, India

+91 261 2464296

info@focuzmedical.in

www.focuzmedical.in

SHAPING THE FUTURE OF
GASTROENTEROLOGY,
UROLOGY AND RADIOLOGY.